



JOIN THE LHPYC CRUISE GROUP

# KEY WEST '24

THURSDAY, MAY 2ND TO SUNDAY, MAY 5TH

ENJOY KEY WEST SONGWRITERS FESTIVAL  
WITH YOUR FELLOW LHPYC MEMBERS AT  
**OCEAN'S EDGE RESORT & MARINA!**

**\*CRUISE GROUP MEMBERS ONLY:**

OPTIONAL PRE & POST EXTENSION ITINERARY NOW AVAILABLE

**BOOKING DEADLINE APRIL 1ST!**

**FOR ROOMS:**



HAVE A SPECIAL REQUEST?

CALL (877) 935-0862

RESERVATIONS

@OCEANSEGEKEYWEST.COM

**LIMITED OCEAN'S EDGE SLIPS:**

RATES: \$5 PER FOOT (25' MIN.)

PLEASE CALL THE MARINA

(786) 862- 6315

**THE PERRY MARINA SLIPS:**

VISIT: [HTTP://TINYURL.COM/5FR5FVH9](http://tinyurl.com/5FR5FVH9)

(LOCATED NEXT TO OCEAN'S EDGE)

RATES: 40' MIN

UNDER 70' \$6.25 PER FOOT

OVER 70' \$8.25

**MAKE SURE TO MENTION YOU ARE WITH LHPYC!**

## LHPYC WEEKEND PRICING

INCLUDES GROUP PLANNED ACTIVITIES & DINING

CRUISE GROUP MEMBER ADULT: \$250

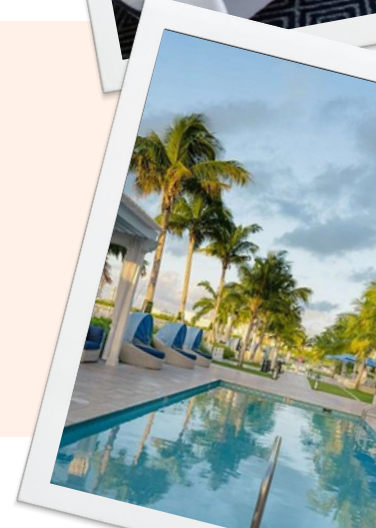
LHPYC MEMBER ADULT: \$300 | LHPYC CHILDREN: \$60

GUEST ADULT: \$350 | GUEST CHILDREN: \$75

KICKIN' OFF THE KEYS PARTY! | GROUP DINNER W/DUELING PIANOS!

GROUP BREAKFAST | KID'S ACTIVITIES & MORE!

**HAVE QUESTIONS? EMAIL [GINA@LHPYC.COM](mailto:GINA@LHPYC.COM)**



# KEY WEST ITINERARY

## THURSDAY 2<sup>nd</sup>



### DEPARTURE TO STOCK ISLAND

Boaters: stay tuned to WhatsApp for departure times and communications!

### RAFFLE RUN! RUN FOR RECEIPTS!

Good for Wednesday & Thursday

Stop at one, stop at all!

Drink (or eat) and save the receipt!

1 receipt = 1 additional raffle ticket

WINNER announced at Friday dinner!

Participating Restaurants::

Burdines Waterfront Bar & Grill

Sunset Grill & Raw Bar

Marlin Bay Bar

Faro Blanco Resort Bar

Islamorada Fish Company

Robbie's of Islamorada

Alabama Jacks

Ocean Breeze Marathon

### 6:30PM KICKIN' OFF THE KEYS!

Sunset Happy Hour & Welcome!

Location: End of Middle Pier

Enjoy our Signature COMPLIMENTARY

Key West Punch, Beer & Wine Plus:

Charcuterie & Cheese Displays

Tomato Caprese Skewers

Buffalo Cauliflower

Mini Crab Cakes

Tuna Tartare

Optional Potluck - Bring a snack to share!

### KEY WEST KIDZ ZONE 6:30PM-8PM

Dockside games until 8PM!

### KEY WEST KIDZ ZONE 8PM-11PM

Fun & games continue!

Sign In | Sign Out Required

## IMPORTANT INFORMATION

### SCOOTER & GOLF CART RENTALS

Hospitality Concierge Services

+1 305 204 5952 or [info@hcs.team](mailto:info@hcs.team)

### BABYSITTING SERVICE

Our Anchored Hearts:

local babysitting service in Key West

They will come to the hotel

and babysit at the hotel or

wherever you need!

305-306-7765

### RESORT PARKING & SHUTTLE

Parking is complimentary

The shuttle departs the resort at the top of the

hour at the Tiki Hut between 9 a.m. and 11 p.m.

with hourly drop-off and pick-up in front of the

Waterfront Brewery in downtown Key West

between 9:25 a.m. and 11:25 p.m.

## FRIDAY 3<sup>rd</sup>



### HAVE FUN EXPLORING

### BUT BE BACK FOR TONIGHT'S GALA!

Hit the most famous spots on Duval  
Flying Monkey | Mallory Square | Sloppy Joe's  
and so much more!!

### 5:30PM 'TUNES IN THE TROPICS'

Attire: Key West Beach Chic

Location: Atlantic Patio

5:30PM - 6:30PM: Cocktail Hour

Passed Hors D'oeuvres

w/ Complimentary Cocktail

### 6:30PM: Dinner - Cash Bar (Cash ONLY)

(Pre-selected entree)

Snapper Piccata w/ Lemon Caper Sauce

Filet Mignon w/ Truffle Demi

Stuffed Chicken Breast

(Roasted Tomato | Wild Mushroom

Goat Cheese | Spinach)

w/ Garlic Mash & Grilled Asparagus

Key Lime Pie

7:30PM-9:30PM:

'Blazing Saddles' Dueling Pianos Show!

**KEY WEST KIDZ ZONE 5:30PM-11PM**

Kidz Buffet 6:30pm

After dinner, follow Miss Katie for games and

movie night! Kiddo Pick Up Time 11PM!

Sign In | Sign Out Required

## SATURDAY 4<sup>th</sup>



### 9AM YOGA

Time for a good stretch before Duval!

Join us poolside

### 10AM GRAB & GO BREAKFAST

We'll be on the Yellowfin Patio

with your fuel!

### THE DAY IS YOURS!

Key West Songwriter Festival

Visit [keywestsongwritersfestival.com](http://keywestsongwritersfestival.com)!

Explore the One & Only - Key West!

### KEY WEST KIDZ ZONE 6PM-12AM

Calling our Key West Kiddos:

Dinner & activities 'til 12am!

Sign in | Sign Out Required

## SUNDAY 5<sup>th</sup>



### 8AM-10AM BREAKFAST

Join us for Breakfast on the Atlantic Patio

Chilled Fresh Assorted Juices & Coffee

Assorted Bagels, Pastries & Croissants

Coconut Ginger Yogurt Parfaits

Individual Cold Cereals

Fresh Tropical Fruit

Scrambled Eggs

Cheesy Potatoes

Applewood Bacon & Breakfast Sausage

### SAFE TRAVELS HOME

SEE YOU NEXT TIME!

## OPTIONAL



### CRUISE GROUP MEMBERS

### OPTIONAL TRIP EXTENSION:

#### EARLY DEPARTURE WEDNESDAY 5/1

Departure times coordinated via WhatsApp

Join us for an overnight anchor

Then off to Oceans Edge!

Book your slip at your preferred marina:

(ie: Faro Blanco | Marlin Bay | Safe Harbor)

#### SUNDAY 5/5 & MONDAY 5/6:

#### FORT JEFFERSON

#### IN DRY TORTUGAS

Join us for a 2 night anchor

(Details to be shared via WhatsApp)

#### TUESDAY 5/7: STOCK ISLAND

Return to Ocean's Edge for the evening

(or preferred marina)

#### WEDNESDAY 5/8: OVERNIGHT ANCHOR

Book your slip at your preferred marina:

(ie: Faro Blanco | Marlin Bay | Safe Harbor)

#### THURSDAY 5/9: JOURNEY HOME

## COMPLETE LHPYC REGISTRATION

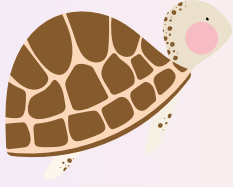


Scan me

# CRUISE GROUP MEMBERS ONLY

# KEY WEST '24

CRUISE GROUP EXTENSION



## ITINERARY

### EARLY DEPARTURE WEDNESDAY 5/1:

Departure times coordinated  
via WhatsApp.

Join us for an overnight anchor  
Then off to Oceans Edge!

Book your slip at  
your preferred marina - ie:

Faro Blanco | Marlin Bay | Safe Harbor

### SUNDAY 5/5 & MONDAY 5/6: FORT JEFFERSON

Join us for a 2 night anchor  
(Details to be shared via WhatsApp)

### TUESDAY 5/7: STOCK ISLAND

Return to Oceans Edge  
for the evening  
(or preferred marina)

### WEDNESDAY 5/8: 1/2 WAY

Book your slip at  
your preferred marina - ie:  
Faro Blanco | Marlin Bay | Safe Harbor

### THURSDAY 5/9: JOURNEY HOME



## SLIP INFORMATION

\*Prices subject to change.

Mention you are w/ LHPYC Cruise Group

### MARLIN BAY

#### MARINA RATES:

Based on overall length.

\$4.25/ft/night

(including swim platform, bowsprits, solar arch, etc)

#### Electric:

30amp is \$10/night | 50 amp is \$15/night

#### Inner Basin Slip Sizes:

24ft to 65ft | Max draft 5ft

#### Outer Basin Slip Sizes:

40ft up to 75ft | Max draft 6ft

#### CONTACT:

Crissandra Pearce: 305 - 731 - 2207 opt. 2  
brian.pearce@marlinbay.com

### FARO BLANCO

#### MARINA RATES:

All Rates Per Foot Per Night

35' - 39': \$5.40 | 40'-49': \$5.95

50'-59': \$6.50 | 60' - 69' : \$7

70' - 79': \$7.10 (35' Minimum)

#### Electric:

110V: \$5/ night | 30amp: \$10/night

50amp: \$15/night | 100amp: \$75/night

#### CONTACT:

John Ruchser: (305) 434 - 9047  
John.ruchser@suntex.com

### SAFE HARBOR

#### MARINA RATES:

All Rates Per Foot Per Night

(25' Minimum)

31' - 35': \$3.35 | 36'-40': \$3.60 | 41' -45': \$3.85

46' - 50': \$4.10 | 51' - 55': \$4.35 | 56' - 60': \$4.60

61' - 70': \$4.85 | 71' - 130': \$5

#### CONTACT:

(305) 743 - 6575  
shmarinas.com/locations/safe-harbor-marathon/

